



ETHER

**South Africa and the International
SPECTRUM of Museum Standards**



ETHER

Accreditation and Standards

Accreditation schemes set agreed standards for museums and tend to raise standards nationally where they are implemented.

International Accreditation Schemes:

- Arts Council England Accreditation Scheme (UK)
- American Alliance of Museums Accreditation (USA/Canada)
- Museums Australia Accreditation Scheme (Australia)



ETHER

Benefits of Accreditation

- Performance
- Profile
- People
- Partnerships
- Planning
- Patronage

Arts Council England

<http://www.artscouncil.org.uk/what-we-do/supporting-museums/accreditation-scheme/>



ETHER

The SPECTRUM Standard for Museum Collections Management

Albania
Azerbaijan
Brazil
Benin
Botswana
Canada
China
Costa Rica
Denmark
Egypt
Fiji
Germany
India
Japan



Jamaica
Korea
Libya
Malaysia
Mexico
Norway
Pakistan
Poland
Qatar
Romania
Russia
Slovenia
Sweden
USA



ETHER

What is SPECTRUM?

It's *not* just a standard...

It is:

- Accumulated practice
- A Community of people
- Intended to be used in pieces and parts
- An open framework
- Unfinished
- Probably familiar to you!



ETHER

SPECTRUM's 21 Procedures

Each procedure is a workflow for how to do something

- Pre-entry
- **Object entry**
- Loans in
- **Acquisition**
- Inventory control
- **Location/ movement control**
- Transport
- **Cataloguing**
- Condition checking
- Conservation
- Risk management
- Insurance
- Valuation
- Audit
- Rights Management
- Use of Collections
- **Object exit**
- **Loans out**
- Loss and damage
- Deaccession and disposal
- **Retrospective documentation**



ETHER

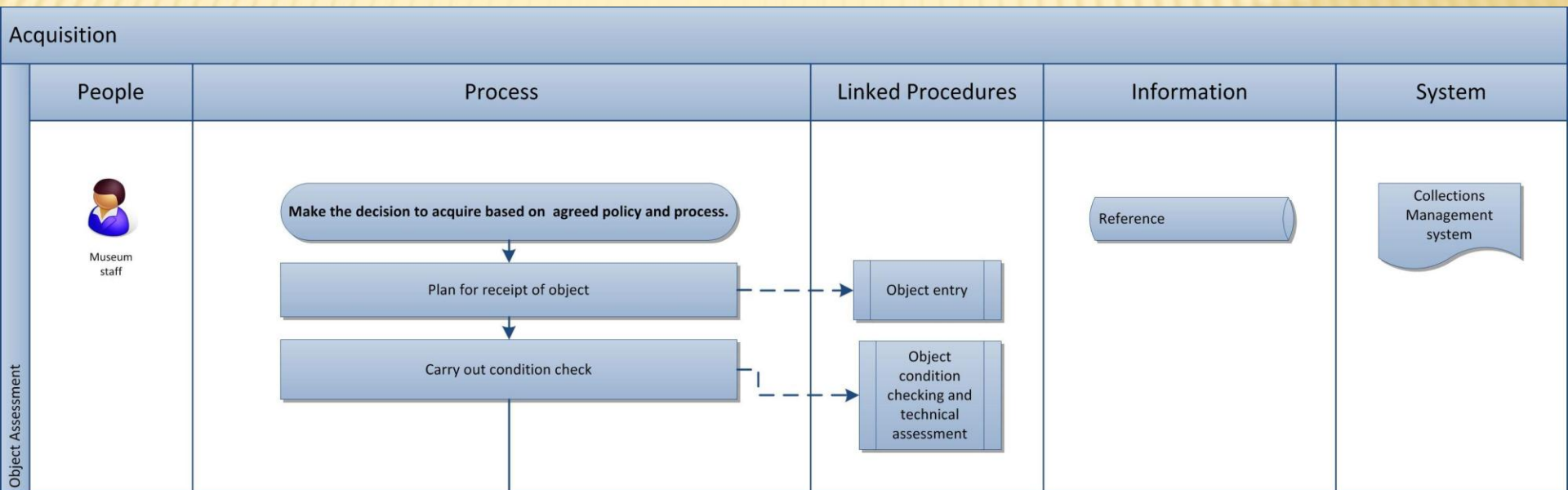
SPECTRUM's 8 Primary Procedures

- Object entry
- Loans in
- Acquisition
- Location/
movement control
- Cataloguing
- Object exit
- Loans out
- Retrospective
documentation



ETHER

Acquisition Procedure



Acquisition Procedure



Museum staff

Obtaining Title

Obtain unambiguous title to the object. This must contain:

- Formal title of the organisation that is acquiring the object
- Name and address of previous owner
- Brief description of object
- Signature confirming transfer of title
- Method of acquisition
- Assignment of rights associated with the object
- Relevant clauses to ensure compliance with *Data Protection Act* and *Freedom of Information Act* legislation

Depending on the method of acquisition, obtain appropriate information and supporting documents



lawyer

Obtaining Title



archaeologist



donor



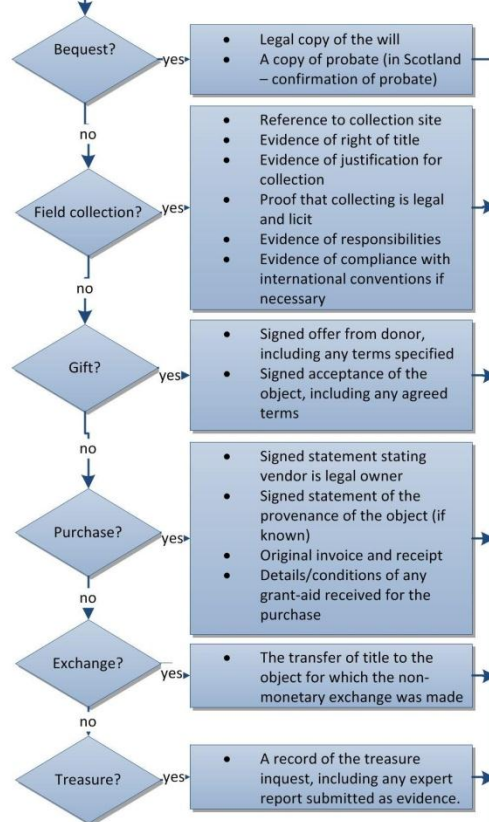
vendor

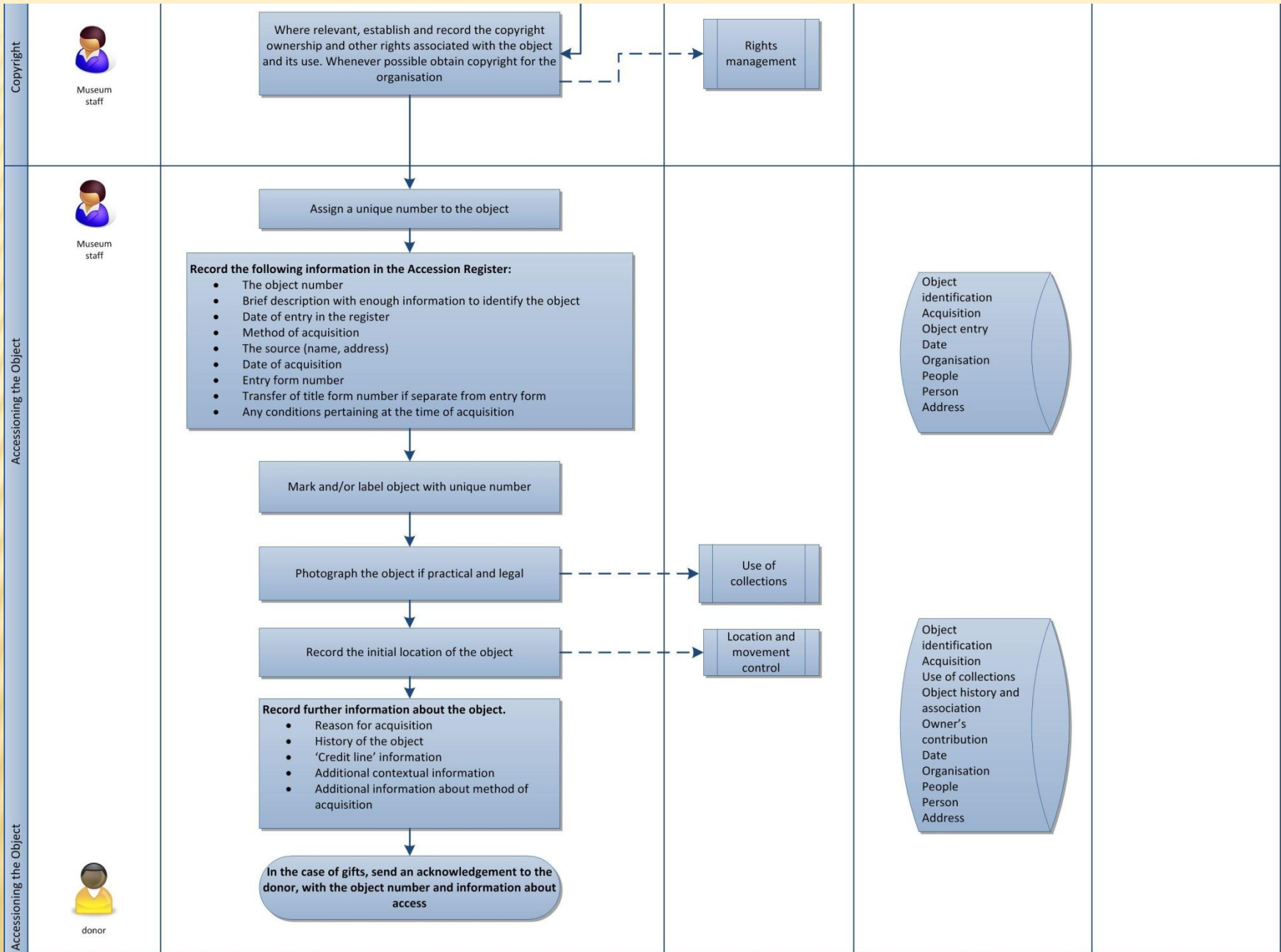


Staff from other museum



Obtaining Title

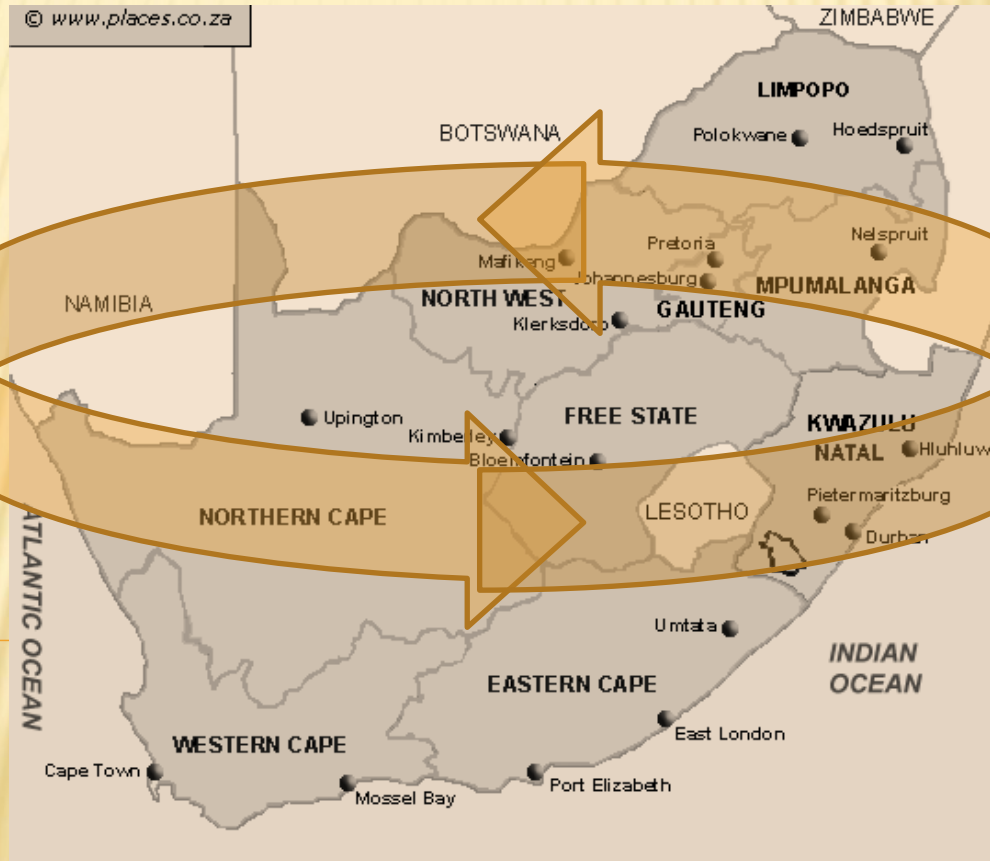






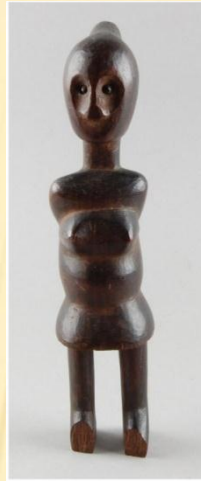
ETHER

Strengthening Relationships

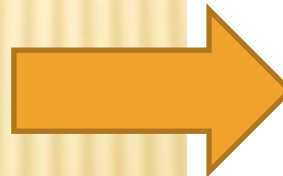




ETHER



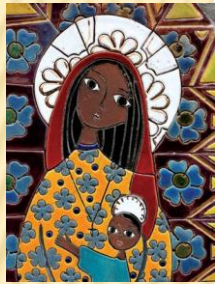
International
Loans/
Repatriation





ETHER

Knowledge Sharing



Main page
Community portal
Current events
Recent changes
Random page
Help

▼ Toolbox
What links here
Related changes
Special pages
Printable version
Permanent link

Page Discussion

Read View source View history

Collections Link Standards wiki

Welcome to the Collections Link Standards Wiki.

1/04/2011 Following the publication of SPECTRUM 4.0 and Benchmarks 2.0 this wiki is currently being updated and re-organised.

This wiki, which is administered by the Collections Trust, provides a platform for the review and development of collections management standards and collections management practitioner, an opportunity to share your comments with colleagues as new texts develop.

The Collections Trust is committed to the open curation of collections management standards and tools, and on this wiki you will find:

- the texts of collections management standards and tools while they are under review
- the texts of collections management standards and tools once they have been published
- discussion pages where you can contribute your experience of the use of reviewed standards and tools, and make suggestions for their improvement

On this wiki you will find texts for:

SPECTRUM



Specialised skills in South Africa :

- Intangible heritage
- Rock art paintings
- Oral history collections



ETHER

Professional Development



- Transferrable skills
- Professionalisation
- Personal development



ETHER

Summary

- Accreditation & Standards bring many potential benefits to museums
- SPECTRUM standards already available for immediate adoption in SA
- SPECTRUM advantages: international & established
- Standards might strengthen relationships between museums in South Africa and overseas
- South Africa can contribute to a wider community of knowledge producers
- Professional development & personal development